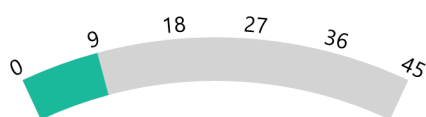


**Banner County Public Schools 2021-2022**

**Positive Partnerships, Relationships, and Success**



**ESU Services Implemented**

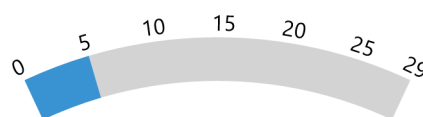
ESU Service Hours ( 43.5 )

ESU Service Recipients ( 93 )

ESU Event Attendance ( 0 )

ESU Event Hours ( 0.00 )

**Transitions**



**ESU Services Implemented**

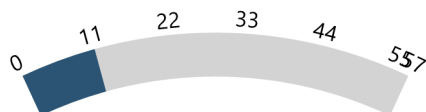
ESU Service Hours ( 33 )

ESU Service Recipients ( 42 )

ESU Event Attendance ( 0 )

ESU Event Hours ( 0.00 )

**Educational Opportunities and Access**



**ESU Services Implemented**

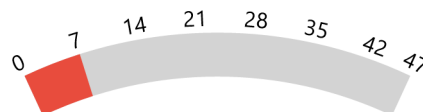
ESU Service Hours ( 43.5 )

ESU Service Recipients ( 83 )

ESU Event Attendance ( 0 )

ESU Event Hours ( 0.00 )

**Postsecondary, Career, and Civic Readiness**



**ESU Services Implemented**

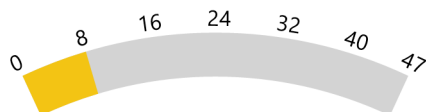
ESU Service Hours ( 43.5 )

ESU Service Recipients ( 94 )

ESU Event Attendance ( 0 )

ESU Event Hours ( 0.00 )

**Student Achievement and Growth**



**ESU Services Implemented**

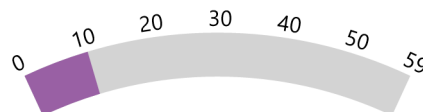
ESU Service Hours ( 34 )

ESU Service Recipients ( 32 )

ESU Event Attendance ( 0 )

ESU Event Hours ( 0.00 )

**Educator Effectiveness**



**ESU Services Implemented**

ESU Service Hours ( 46.5 )

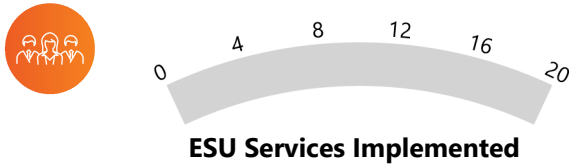
ESU Service Recipients ( 95 )

ESU Event Attendance ( 0 )

ESU Event Hours ( 0.00 )

**Banner County Public Schools 2021-2022**

**Leadership**



ESU Service Hours ( 8 )

ESU Service Recipients ( 23 )

ESU Event Attendance ( 0 )

ESU Event Hours ( 0.00 )