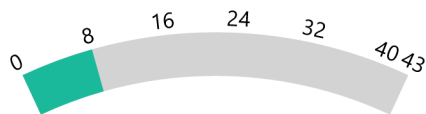


Garden County Schools 2021-2022

Positive Partnerships, Relationships, and Success



ESU Services Implemented

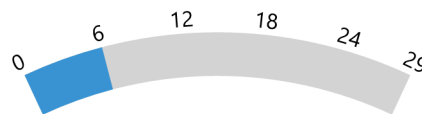
ESU Service Hours (57.15)

ESU Service Recipients (30)

ESU Event Attendance (0)

ESU Event Hours (0.00)

Transitions



ESU Services Implemented

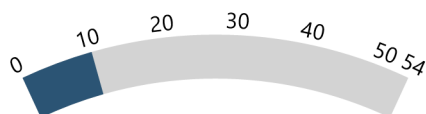
ESU Service Hours (48.15)

ESU Service Recipients (27)

ESU Event Attendance (0)

ESU Event Hours (0.00)

Educational Opportunities and Access



ESU Services Implemented

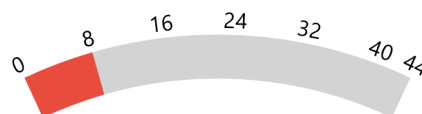
ESU Service Hours (58.15)

ESU Service Recipients (31)

ESU Event Attendance (0)

ESU Event Hours (0.00)

Postsecondary, Career, and Civic Readiness



ESU Services Implemented

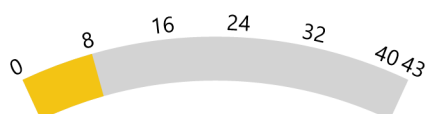
ESU Service Hours (73.65)

ESU Service Recipients (34)

ESU Event Attendance (0)

ESU Event Hours (0.00)

Student Achievement and Growth



ESU Services Implemented

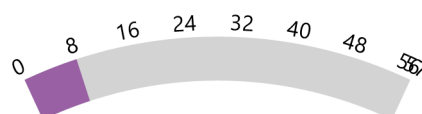
ESU Service Hours (72.65)

ESU Service Recipients (33)

ESU Event Attendance (0)

ESU Event Hours (0.00)

Educator Effectiveness



ESU Services Implemented

ESU Service Hours (78.15)

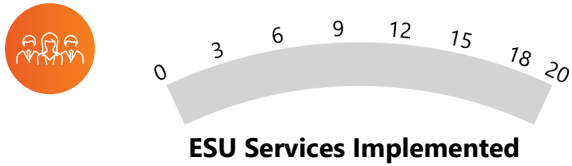
ESU Service Recipients (35)

ESU Event Attendance (0)

ESU Event Hours (0.00)

Garden County Schools 2021-2022

Leadership



ESU Service Hours (9)

ESU Service Recipients (3)

ESU Event Attendance (0)

ESU Event Hours (0.00)