

## Overton Public Schools 2023-2024

### Positive Partnerships, Relationships, and Success



**ESU Services Implemented**

ESU Service Hours ( 37 )

ESU Service Recipients ( 8 )

### Postsecondary, Career, and Civic Readiness



**ESU Services Implemented**

ESU Service Hours ( 85.5 )

ESU Service Recipients ( 29 )

### Educational Opportunities and Access

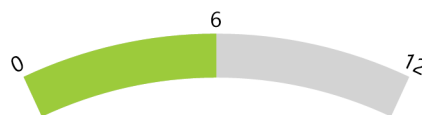


**ESU Services Implemented**

ESU Service Hours ( 103.75 )

ESU Service Recipients ( 55 )

### Educator Effectiveness



**ESU Services Implemented**

ESU Service Hours ( 54 )

ESU Service Recipients ( 25 )

### Student Achievement and Growth

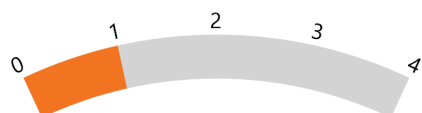


**ESU Services Implemented**

ESU Service Hours ( 85.5 )

ESU Service Recipients ( 29 )

### Leadership



**ESU Services Implemented**

ESU Service Hours ( 37 )

ESU Service Recipients ( 8 )

### Transitions



**ESU Services Implemented**

ESU Service Hours ( 59.25 )

ESU Service Recipients ( 27 )