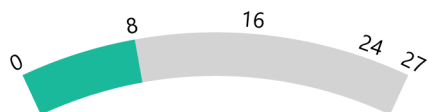


**Loup County Public Schools 2021-2022**

**Positive Partnerships, Relationships, and Success**



**ESU Services Implemented**

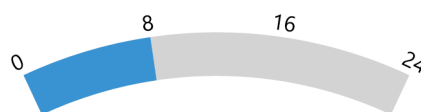
ESU Service Hours ( 10 )

ESU Service Recipients ( 47 )

ESU Event Attendance ( 0 )

ESU Event Hours ( 0.00 )

**Transitions**



**ESU Services Implemented**

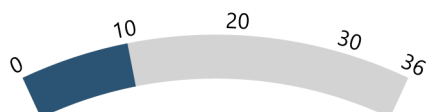
ESU Service Hours ( 10 )

ESU Service Recipients ( 47 )

ESU Event Attendance ( 0 )

ESU Event Hours ( 0.00 )

**Educational Opportunities and Access**



**ESU Services Implemented**

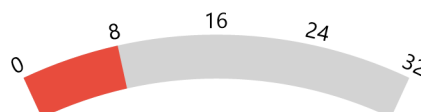
ESU Service Hours ( 28.99 )

ESU Service Recipients ( 85 )

ESU Event Attendance ( 0 )

ESU Event Hours ( 0.00 )

**Postsecondary, Career, and Civic Readiness**



**ESU Services Implemented**

ESU Service Hours ( 10 )

ESU Service Recipients ( 47 )

ESU Event Attendance ( 0 )

ESU Event Hours ( 0.00 )

**Student Achievement and Growth**



**ESU Services Implemented**

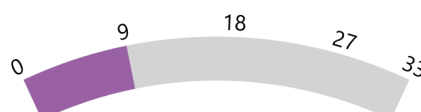
ESU Service Hours ( 24.59 )

ESU Service Recipients ( 54 )

ESU Event Attendance ( 0 )

ESU Event Hours ( 0.00 )

**Educator Effectiveness**



**ESU Services Implemented**

ESU Service Hours ( 43.58 )

ESU Service Recipients ( 92 )

ESU Event Attendance ( 0 )

ESU Event Hours ( 0.00 )

**Loup County Public Schools 2021-2022**

**Leadership**



ESU Service Hours ( 43.58 )

ESU Service Recipients ( 92 )

ESU Event Attendance ( 0 )

ESU Event Hours ( 0.00 )