

## Elm Creek Public Schools 2023-2024

### Positive Partnerships, Relationships, and Success

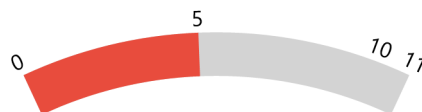


**ESU Services Implemented**

ESU Service Hours ( 9 )

ESU Service Recipients ( 9 )

### Postsecondary, Career, and Civic Readiness

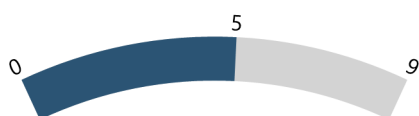


**ESU Services Implemented**

ESU Service Hours ( 118.75 )

ESU Service Recipients ( 29 )

### Educational Opportunities and Access

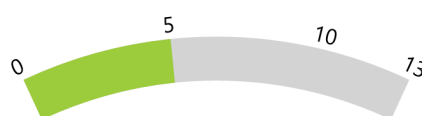


**ESU Services Implemented**

ESU Service Hours ( 52.2 )

ESU Service Recipients ( 29 )

### Educator Effectiveness



**ESU Services Implemented**

ESU Service Hours ( 163.5 )

ESU Service Recipients ( 34 )

### Student Achievement and Growth



**ESU Services Implemented**

ESU Service Hours ( 114.25 )

ESU Service Recipients ( 25 )

### Leadership

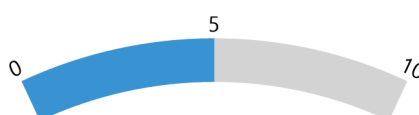


**ESU Services Implemented**

ESU Service Hours ( 62.75 )

ESU Service Recipients ( 22 )

### Transitions



**ESU Services Implemented**

ESU Service Hours ( 133.7 )

ESU Service Recipients ( 40 )