

## Anselmo-Merna Public Schools 2023-2024

### Positive Partnerships, Relationships, and Success

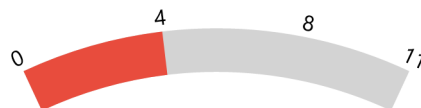


**ESU Services Implemented**

ESU Service Hours ( 37 )

ESU Service Recipients ( 59 )

### Postsecondary, Career, and Civic Readiness



**ESU Services Implemented**

ESU Service Hours ( 74 )

ESU Service Recipients ( 58 )

### Educational Opportunities and Access

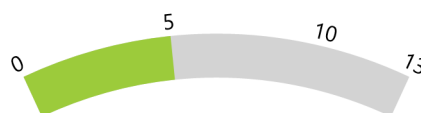


**ESU Services Implemented**

ESU Service Hours ( 78.75 )

ESU Service Recipients ( 78 )

### Educator Effectiveness



**ESU Services Implemented**

ESU Service Hours ( 58.25 )

ESU Service Recipients ( 49 )

### Student Achievement and Growth



**ESU Services Implemented**

ESU Service Hours ( 74 )

ESU Service Recipients ( 58 )

### Leadership

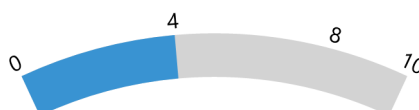


**ESU Services Implemented**

ESU Service Hours ( 39 )

ESU Service Recipients ( 61 )

### Transitions



**ESU Services Implemented**

ESU Service Hours ( 64.5 )

ESU Service Recipients ( 49 )