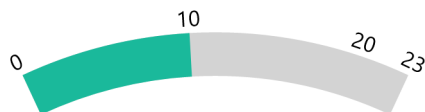


**Shelton Public Schools 2021-2022**

**Positive Partnerships, Relationships, and Success**



**ESU Services Implemented**

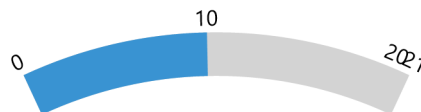
ESU Service Hours ( 23.75 )

ESU Service Recipients ( 83 )

ESU Event Attendance ( 0 )

ESU Event Hours ( 0.00 )

**Transitions**



**ESU Services Implemented**

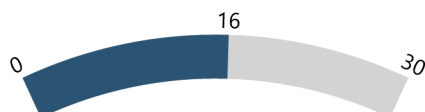
ESU Service Hours ( 30.5 )

ESU Service Recipients ( 89 )

ESU Event Attendance ( 0 )

ESU Event Hours ( 0.00 )

**Educational Opportunities and Access**



**ESU Services Implemented**

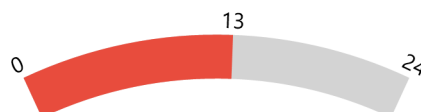
ESU Service Hours ( 109.85 )

ESU Service Recipients ( 201 )

ESU Event Attendance ( 0 )

ESU Event Hours ( 0.00 )

**Postsecondary, Career, and Civic Readiness**



**ESU Services Implemented**

ESU Service Hours ( 46.25 )

ESU Service Recipients ( 102 )

ESU Event Attendance ( 0 )

ESU Event Hours ( 0.00 )

**Student Achievement and Growth**



**ESU Services Implemented**

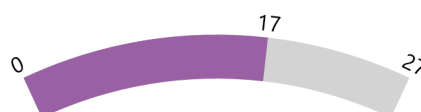
ESU Service Hours ( 74.41 )

ESU Service Recipients ( 130 )

ESU Event Attendance ( 4 )

ESU Event Hours ( 5.00 )

**Educator Effectiveness**



**ESU Services Implemented**

ESU Service Hours ( 166.01 )

ESU Service Recipients ( 252 )

ESU Event Attendance ( 4 )

ESU Event Hours ( 5.00 )

**Shelton Public Schools 2021-2022**

**Leadership**



**ESU Services Implemented**

ESU Service Hours ( 95.51 )

ESU Service Recipients ( 162 )

ESU Event Attendance ( 4 )

ESU Event Hours ( 5.00 )