

## Central Valley Public Schools 2023-2024

### Positive Partnerships, Relationships, and Success

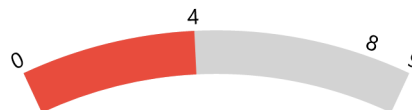


**ESU Services Implemented**

ESU Service Hours ( 32.75 )

ESU Service Recipients ( 37 )

### Postsecondary, Career, and Civic Readiness



**ESU Services Implemented**

ESU Service Hours ( 162.25 )

ESU Service Recipients ( 95 )

### Educational Opportunities and Access

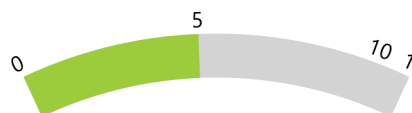


**ESU Services Implemented**

ESU Service Hours ( 63.75 )

ESU Service Recipients ( 137 )

### Educator Effectiveness

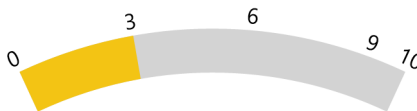


**ESU Services Implemented**

ESU Service Hours ( 233.5 )

ESU Service Recipients ( 125 )

### Student Achievement and Growth



**ESU Services Implemented**

ESU Service Hours ( 160.25 )

ESU Service Recipients ( 82 )

### Leadership

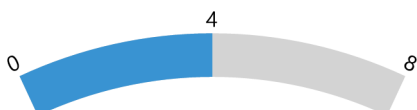


**ESU Services Implemented**

ESU Service Hours ( 103.25 )

ESU Service Recipients ( 68 )

### Transitions



**ESU Services Implemented**

ESU Service Hours ( 170.5 )

ESU Service Recipients ( 89 )