

# Superior Public Schools 2020-2021

## Positive Partnerships, Relationships, and Success



**ESU Services Implemented**

ESU Service Hours ( 0 )

ESU Service Recipients ( 0 )

ESU Event Attendance ( 11 )

ESU Event Hours ( 53.75 )

## Transitions



**ESU Services Implemented**

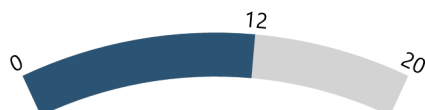
ESU Service Hours ( 0 )

ESU Service Recipients ( 0 )

ESU Event Attendance ( 11 )

ESU Event Hours ( 35.25 )

## Educational Opportunities and Access



**ESU Services Implemented**

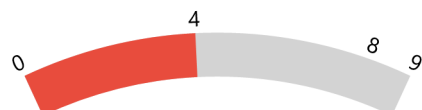
ESU Service Hours ( 0 )

ESU Service Recipients ( 0 )

ESU Event Attendance ( 12 )

ESU Event Hours ( 41.00 )

## Postsecondary, Career, and Civic Readiness



**ESU Services Implemented**

ESU Service Hours ( 0 )

ESU Service Recipients ( 0 )

ESU Event Attendance ( 5 )

ESU Event Hours ( 16.00 )

## Student Achievement and Growth



**ESU Services Implemented**

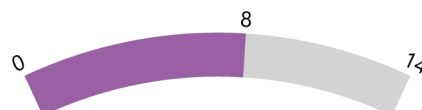
ESU Service Hours ( 0 )

ESU Service Recipients ( 0 )

ESU Event Attendance ( 13 )

ESU Event Hours ( 60.50 )

## Educator Effectiveness



**ESU Services Implemented**

ESU Service Hours ( 0 )

ESU Service Recipients ( 0 )

ESU Event Attendance ( 13 )

ESU Event Hours ( 60.50 )

**Superior Public Schools 2020-2021**

**Leadership**



**ESU Services Implemented**

ESU Service Hours ( 0 )

ESU Service Recipients ( 0 )

ESU Event Attendance ( 4 )

ESU Event Hours ( 10.25 )