

**Sutton Public Schools 2020-2021**

**Positive Partnerships, Relationships, and Success**



**ESU Services Implemented**

ESU Service Hours ( 0 )

ESU Service Recipients ( 0 )

ESU Event Attendance ( 13 )

ESU Event Hours ( 37.75 )

**Transitions**



**ESU Services Implemented**

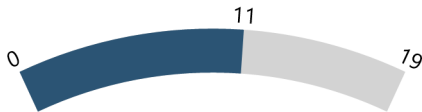
ESU Service Hours ( 1 )

ESU Service Recipients ( 5 )

ESU Event Attendance ( 9 )

ESU Event Hours ( 28.00 )

**Educational Opportunities and Access**



**ESU Services Implemented**

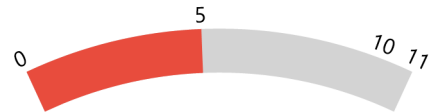
ESU Service Hours ( 0 )

ESU Service Recipients ( 0 )

ESU Event Attendance ( 10 )

ESU Event Hours ( 33.75 )

**Postsecondary, Career, and Civic Readiness**



**ESU Services Implemented**

ESU Service Hours ( 1 )

ESU Service Recipients ( 5 )

ESU Event Attendance ( 8 )

ESU Event Hours ( 22.75 )

**Student Achievement and Growth**



**ESU Services Implemented**

ESU Service Hours ( 10.99 )

ESU Service Recipients ( 125 )

ESU Event Attendance ( 31 )

ESU Event Hours ( 43.75 )

**Educator Effectiveness**



**ESU Services Implemented**

ESU Service Hours ( 10.99 )

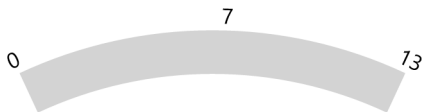
ESU Service Recipients ( 125 )

ESU Event Attendance ( 35 )

ESU Event Hours ( 53.50 )

**Sutton Public Schools 2020-2021**

**Leadership**



**ESU Services Implemented**

ESU Service Hours ( 9.99 )

ESU Service Recipients ( 120 )

ESU Event Attendance ( 29 )

ESU Event Hours ( 36.75 )