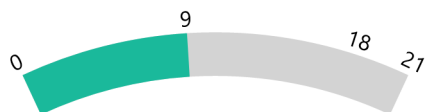


**Battle Creek Public Schools 2021-2022**

**Positive Partnerships, Relationships, and Success**



**ESU Services Implemented**

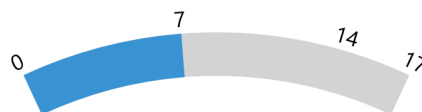
ESU Service Hours ( 66.4 )

ESU Service Recipients ( 115 )

ESU Event Attendance ( 0 )

ESU Event Hours ( 0.00 )

**Transitions**



**ESU Services Implemented**

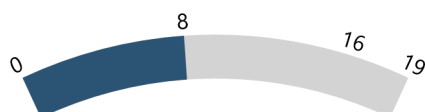
ESU Service Hours ( 52.65 )

ESU Service Recipients ( 78 )

ESU Event Attendance ( 0 )

ESU Event Hours ( 0.00 )

**Educational Opportunities and Access**



**ESU Services Implemented**

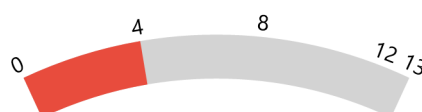
ESU Service Hours ( 55.9 )

ESU Service Recipients ( 81 )

ESU Event Attendance ( 0 )

ESU Event Hours ( 0.00 )

**Postsecondary, Career, and Civic Readiness**



**ESU Services Implemented**

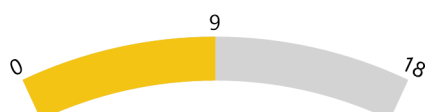
ESU Service Hours ( 46.4 )

ESU Service Recipients ( 69 )

ESU Event Attendance ( 0 )

ESU Event Hours ( 0.00 )

**Student Achievement and Growth**



**ESU Services Implemented**

ESU Service Hours ( 77.28 )

ESU Service Recipients ( 100 )

ESU Event Attendance ( 1 )

ESU Event Hours ( 2.00 )

**Educator Effectiveness**



**ESU Services Implemented**

ESU Service Hours ( 85.53 )

ESU Service Recipients ( 105 )

ESU Event Attendance ( 1 )

ESU Event Hours ( 2.00 )

**Battle Creek Public Schools 2021-2022**

**Leadership**



**ESU Services Implemented**

ESU Service Hours ( 71.53 )

ESU Service Recipients ( 135 )

ESU Event Attendance ( 1 )

ESU Event Hours ( 2.00 )