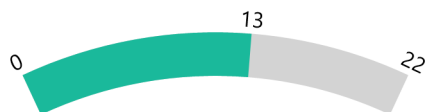


# Schuyler Community Schools 2021-2022

## Positive Partnerships, Relationships, and Success



### ESU Services Implemented

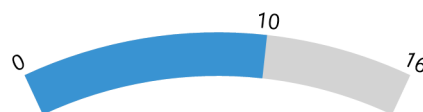
ESU Service Hours ( 126.25 )

ESU Service Recipients ( 322 )

ESU Event Attendance ( 0 )

ESU Event Hours ( 0.00 )

## Transitions



### ESU Services Implemented

ESU Service Hours ( 84.25 )

ESU Service Recipients ( 424 )

ESU Event Attendance ( 0 )

ESU Event Hours ( 0.00 )

## Educational Opportunities and Access



### ESU Services Implemented

ESU Service Hours ( 155.5 )

ESU Service Recipients ( 494 )

ESU Event Attendance ( 0 )

ESU Event Hours ( 0.00 )

## Postsecondary, Career, and Civic Readiness



### ESU Services Implemented

ESU Service Hours ( 105.9166666666 )

ESU Service Recipients ( 468 )

ESU Event Attendance ( 0 )

ESU Event Hours ( 0.00 )

## Student Achievement and Growth



### ESU Services Implemented

ESU Service Hours ( 137.4166666666 )

ESU Service Recipients ( 606 )

ESU Event Attendance ( 0 )

ESU Event Hours ( 0.00 )

## Educator Effectiveness



### ESU Services Implemented

ESU Service Hours ( 176.9166666666 )

ESU Service Recipients ( 669 )

ESU Event Attendance ( 0 )

ESU Event Hours ( 0.00 )

# Schuyler Community Schools 2021-2022

**Leadership**



**ESU Services Implemented**

ESU Service Hours ( 85.75 )

ESU Service Recipients ( 387 )

ESU Event Attendance ( 0 )

ESU Event Hours ( 0.00 )