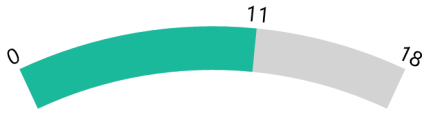


**Columbus Public Schools 2021-2022**

**Positive Partnerships, Relationships, and Success**



**ESU Services Implemented**

ESU Service Hours ( 58.75 )

ESU Service Recipients ( 34 )

ESU Event Attendance ( 0 )

ESU Event Hours ( 0.00 )

**Transitions**



**ESU Services Implemented**

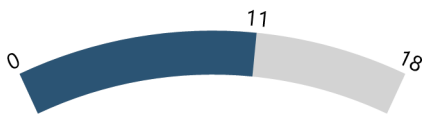
ESU Service Hours ( 41.5 )

ESU Service Recipients ( 20 )

ESU Event Attendance ( 0 )

ESU Event Hours ( 0.00 )

**Educational Opportunities and Access**



**ESU Services Implemented**

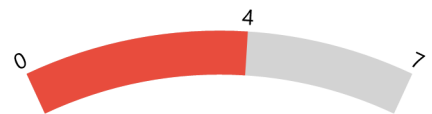
ESU Service Hours ( 58.75 )

ESU Service Recipients ( 34 )

ESU Event Attendance ( 0 )

ESU Event Hours ( 0.00 )

**Postsecondary, Career, and Civic Readiness**



**ESU Services Implemented**

ESU Service Hours ( 31.5 )

ESU Service Recipients ( 12 )

ESU Event Attendance ( 0 )

ESU Event Hours ( 0.00 )

**Student Achievement and Growth**



**ESU Services Implemented**

ESU Service Hours ( 57.75 )

ESU Service Recipients ( 33 )

ESU Event Attendance ( 0 )

ESU Event Hours ( 0.00 )

**Educator Effectiveness**



**ESU Services Implemented**

ESU Service Hours ( 58.75 )

ESU Service Recipients ( 34 )

ESU Event Attendance ( 0 )

ESU Event Hours ( 0.00 )

**Columbus Public Schools 2021-2022**

**Leadership**



**ESU Services Implemented**

ESU Service Hours ( 20.25 )

ESU Service Recipients ( 12 )

ESU Event Attendance ( 0 )

ESU Event Hours ( 0.00 )