

**Friend Public Schools 2020-2021**

**Positive Partnerships, Relationships, and Success**



**ESU Services Implemented**

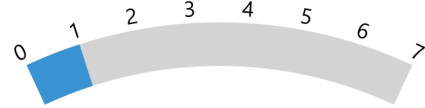
ESU Service Hours ( 0 )

ESU Service Recipients ( 0 )

ESU Event Attendance ( 3 )

ESU Event Hours ( 15.25 )

**Transitions**



**ESU Services Implemented**

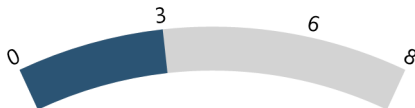
ESU Service Hours ( 0 )

ESU Service Recipients ( 0 )

ESU Event Attendance ( 1 )

ESU Event Hours ( 13.25 )

**Educational Opportunities and Access**



**ESU Services Implemented**

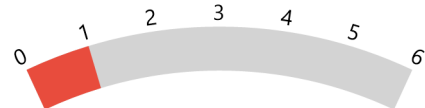
ESU Service Hours ( 0 )

ESU Service Recipients ( 0 )

ESU Event Attendance ( 3 )

ESU Event Hours ( 15.25 )

**Postsecondary, Career, and Civic Readiness**



**ESU Services Implemented**

ESU Service Hours ( 0 )

ESU Service Recipients ( 0 )

ESU Event Attendance ( 0 )

ESU Event Hours ( 0.00 )

**Student Achievement and Growth**



**ESU Services Implemented**

ESU Service Hours ( 0 )

ESU Service Recipients ( 0 )

ESU Event Attendance ( 0 )

ESU Event Hours ( 0.00 )

**Educator Effectiveness**



**ESU Services Implemented**

ESU Service Hours ( 0 )

ESU Service Recipients ( 0 )

ESU Event Attendance ( 0 )

ESU Event Hours ( 0.00 )

**Friend Public Schools 2020-2021**

**Leadership**



Minimum for Scale should be less than  
Maximum of GaugePanel 'GaugePanel1'.

**ESU Services Implemented**

ESU Service Hours ( 0 )

ESU Service Recipients ( 0 )

ESU Event Attendance ( 0 )

ESU Event Hours ( 0.00 )