

# Fillmore Central Public Schs 2020-2021

## Positive Partnerships, Relationships, and Success



**ESU Services Implemented**

ESU Service Hours ( 0 )

ESU Service Recipients ( 0 )

ESU Event Attendance ( 2 )

ESU Event Hours ( 2.00 )

## Transitions



**ESU Services Implemented**

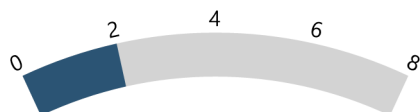
ESU Service Hours ( 0 )

ESU Service Recipients ( 0 )

ESU Event Attendance ( 0 )

ESU Event Hours ( 0.00 )

## Educational Opportunities and Access



**ESU Services Implemented**

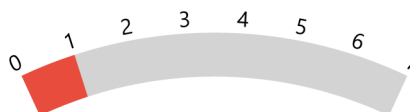
ESU Service Hours ( 0 )

ESU Service Recipients ( 0 )

ESU Event Attendance ( 2 )

ESU Event Hours ( 2.00 )

## Postsecondary, Career, and Civic Readiness



**ESU Services Implemented**

ESU Service Hours ( 0 )

ESU Service Recipients ( 0 )

ESU Event Attendance ( 0 )

ESU Event Hours ( 0.00 )

## Student Achievement and Growth



**ESU Services Implemented**

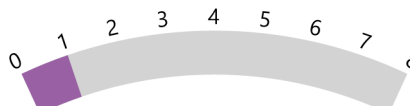
ESU Service Hours ( 0 )

ESU Service Recipients ( 0 )

ESU Event Attendance ( 0 )

ESU Event Hours ( 0.00 )

## Educator Effectiveness



**ESU Services Implemented**

ESU Service Hours ( 0 )

ESU Service Recipients ( 0 )

ESU Event Attendance ( 0 )

ESU Event Hours ( 0.00 )

**Fillmore Central Public Schs 2020-2021**

**Leadership**



Minimum for Scale should be less than  
Maximum of GaugePanel 'GaugePanel1'.

**ESU Services Implemented**

ESU Service Hours ( 0 )

ESU Service Recipients ( 0 )

ESU Event Attendance ( 0 )

ESU Event Hours ( 0.00 )