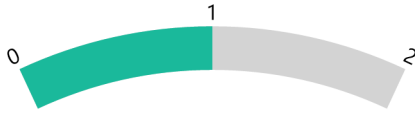


# Wilber-Clatonia Public Schools 2024-2025

## Positive Partnerships, Relationships, and Success

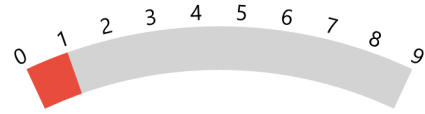


**ESU Services Implemented**

ESU Service Hours ( 10 )

ESU Service Recipients ( 6 )

## Postsecondary, Career, and Civic Readiness

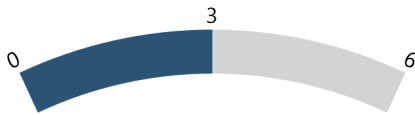


**ESU Services Implemented**

ESU Service Hours ( 2 )

ESU Service Recipients ( 3 )

## Educational Opportunities and Access

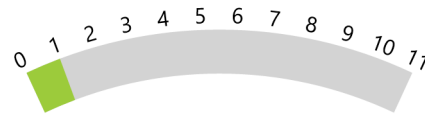


**ESU Services Implemented**

ESU Service Hours ( 29.5 )

ESU Service Recipients ( 9 )

## Educator Effectiveness

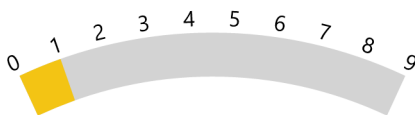


**ESU Services Implemented**

ESU Service Hours ( 2 )

ESU Service Recipients ( 3 )

## Student Achievement and Growth

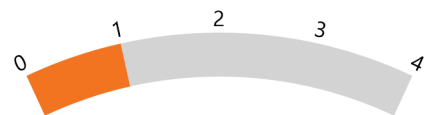


**ESU Services Implemented**

ESU Service Hours ( 2 )

ESU Service Recipients ( 3 )

## Leadership

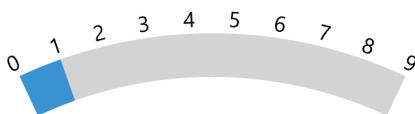


**ESU Services Implemented**

ESU Service Hours ( 10 )

ESU Service Recipients ( 6 )

## Transitions



**ESU Services Implemented**

ESU Service Hours ( 2 )

ESU Service Recipients ( 3 )