

## Crete Public Schools 2023-2024

### Positive Partnerships, Relationships, and Success



**ESU Services Implemented**

ESU Service Hours ( 6 )

ESU Service Recipients ( 1 )

### Postsecondary, Career, and Civic Readiness



**ESU Services Implemented**

ESU Service Hours ( 60.3 )

ESU Service Recipients ( 61 )

### Educational Opportunities and Access



**ESU Services Implemented**

ESU Service Hours ( 27 )

ESU Service Recipients ( 7 )

### Educator Effectiveness



**ESU Services Implemented**

ESU Service Hours ( 77.3 )

ESU Service Recipients ( 73 )

### Student Achievement and Growth

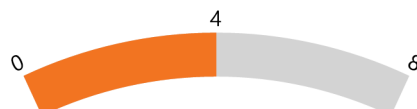


**ESU Services Implemented**

ESU Service Hours ( 60.3 )

ESU Service Recipients ( 61 )

### Leadership



**ESU Services Implemented**

ESU Service Hours ( 25 )

ESU Service Recipients ( 14 )

### Transitions



**ESU Services Implemented**

ESU Service Hours ( 58.3 )

ESU Service Recipients ( 60 )